

Data-Driven Improvement & System Transformation

Rotunda Floyd-Cooper, Ed.D

Sims, Ph.D

Principal

Systemic Improvement Specialist

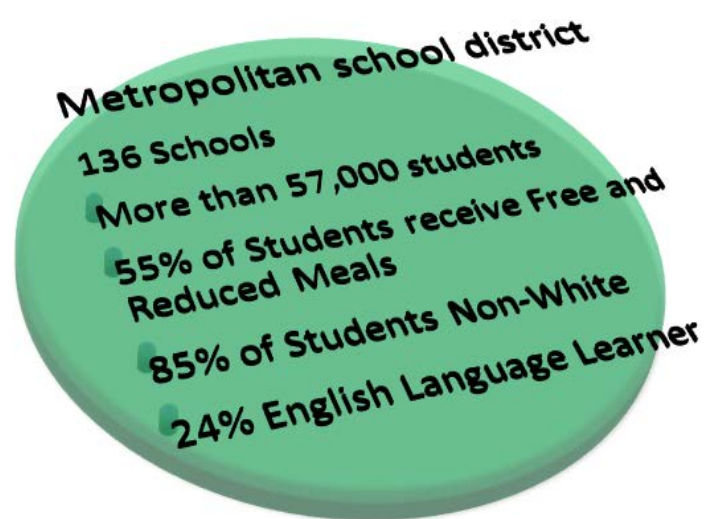
Martin Luther King, Jr. Middle School

Anthony E.

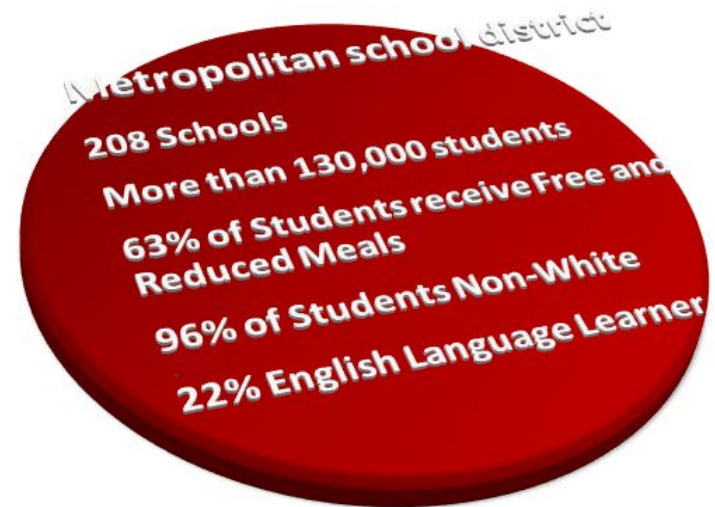


Common Challenges ⚡ Unique Solutions

San Francisco Unified School District



Prince George's County Public Schools



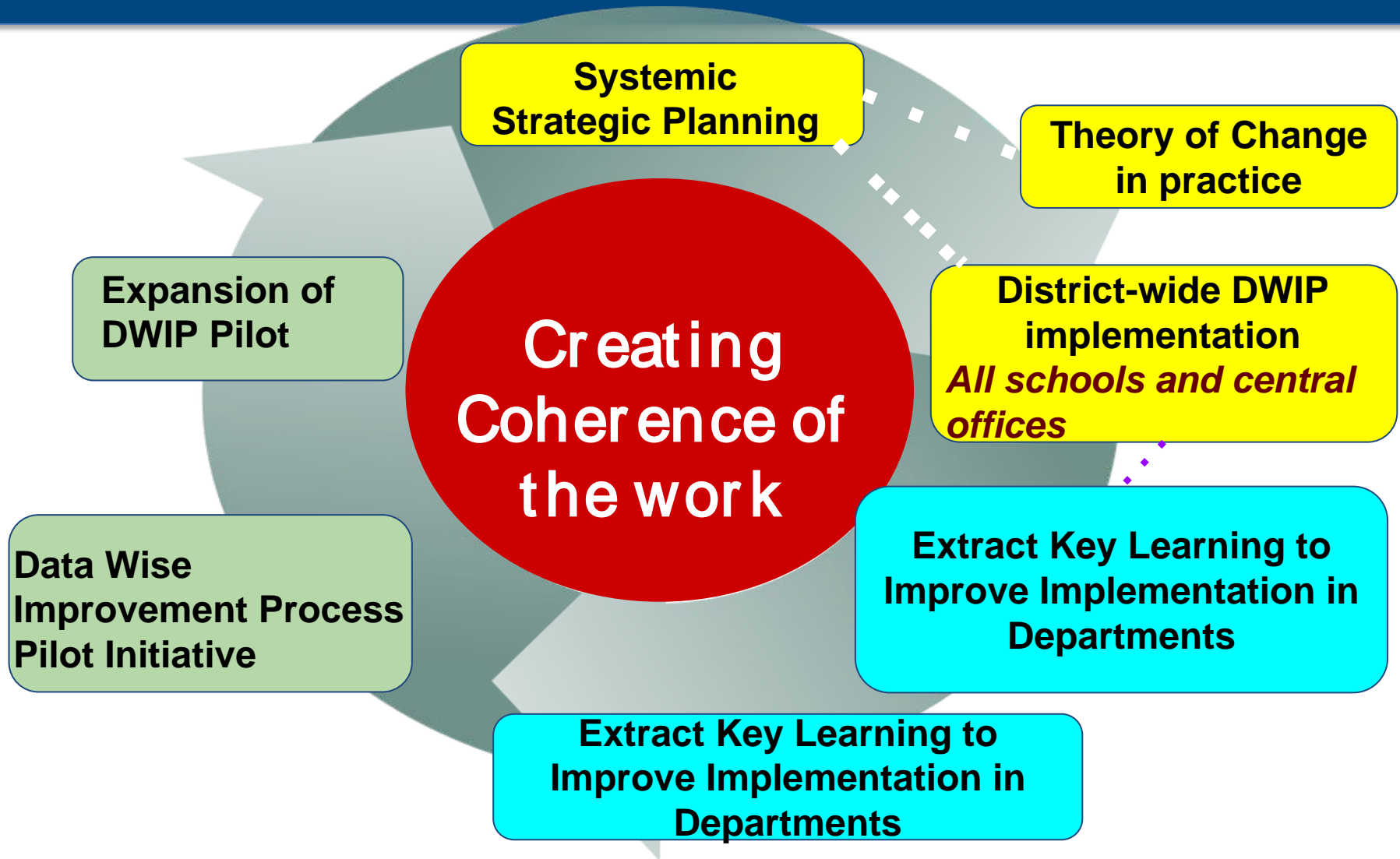
Common Challenges exist among urban districts:

- Low student achievement
- A lack of instructional coherence**
- Inexperienced teaching staff
- Poorly functioning data management systems

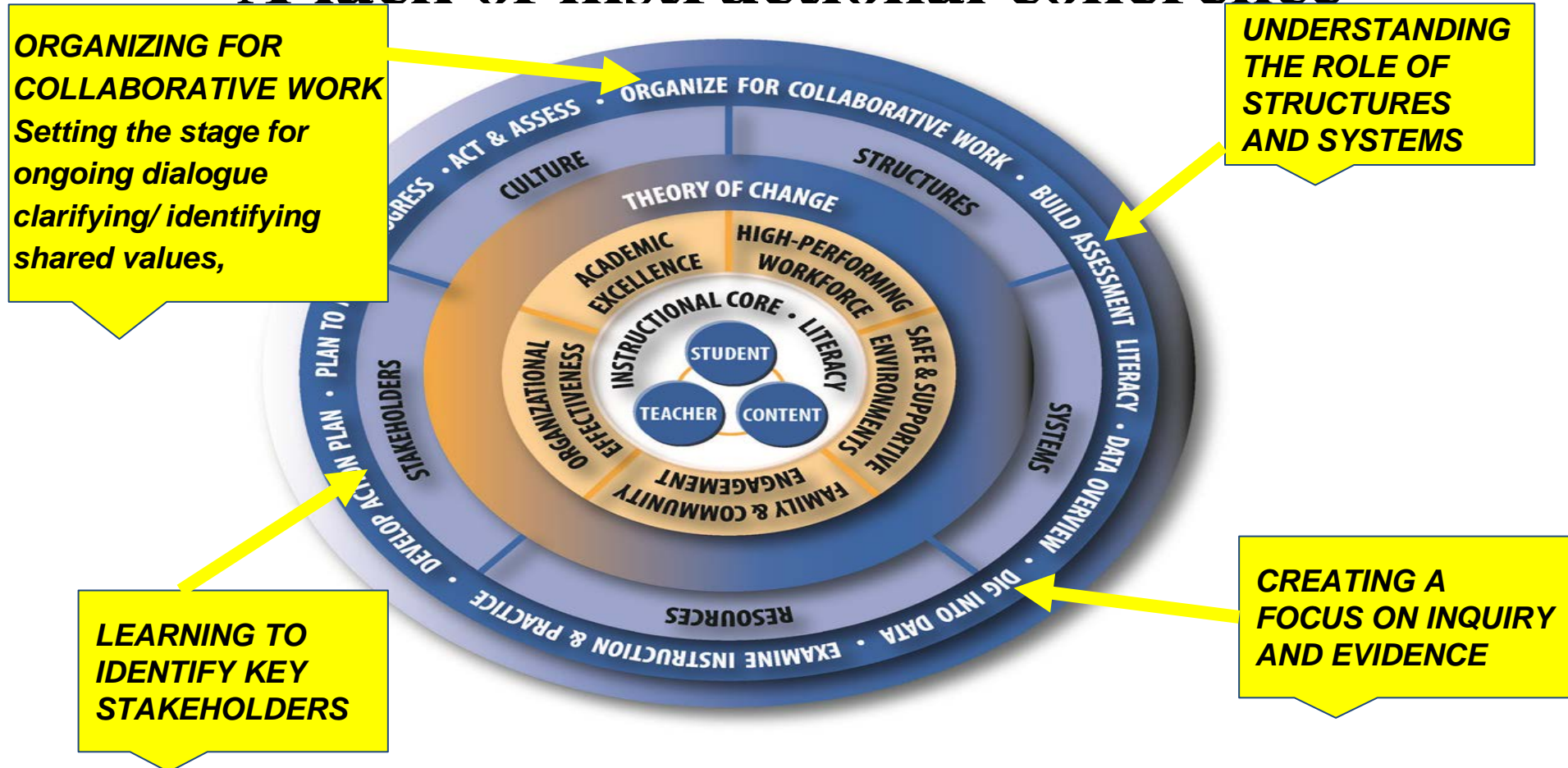
(Kincheloe, 2004, 2010; MDRC, 2002).

R. Alimi, A. G. O'Connell, C. Ferguson, P. Noguera (2011) *Framing urban school challenges: The problems to examine when implementing response to intervention* Retrieved from [http://www. RTInetwork. org/learn/diversity/urban-school ...](http://www.RTInetwork.org/learn/diversity/urban-school...)

The Journey to Excellence...



A lack of instructional coherence



Operationalizing the Theory of Change

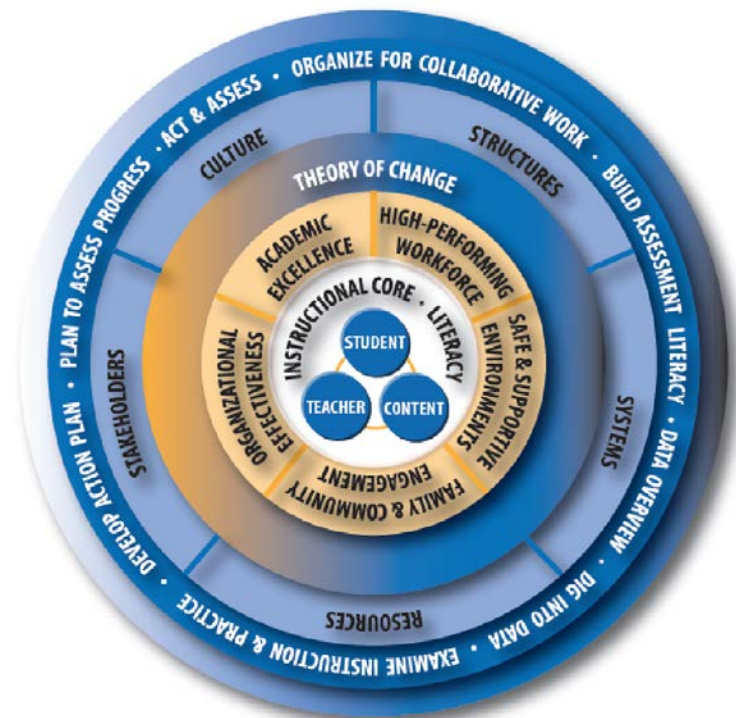
“If we focus on culture, data, and performance – with a lens on literacy, then we will have outstanding academic achievement for all students.”

Theory of Change

Culture – *facilitate* respecting all voices and perspectives, promoting inquiry and objectivity

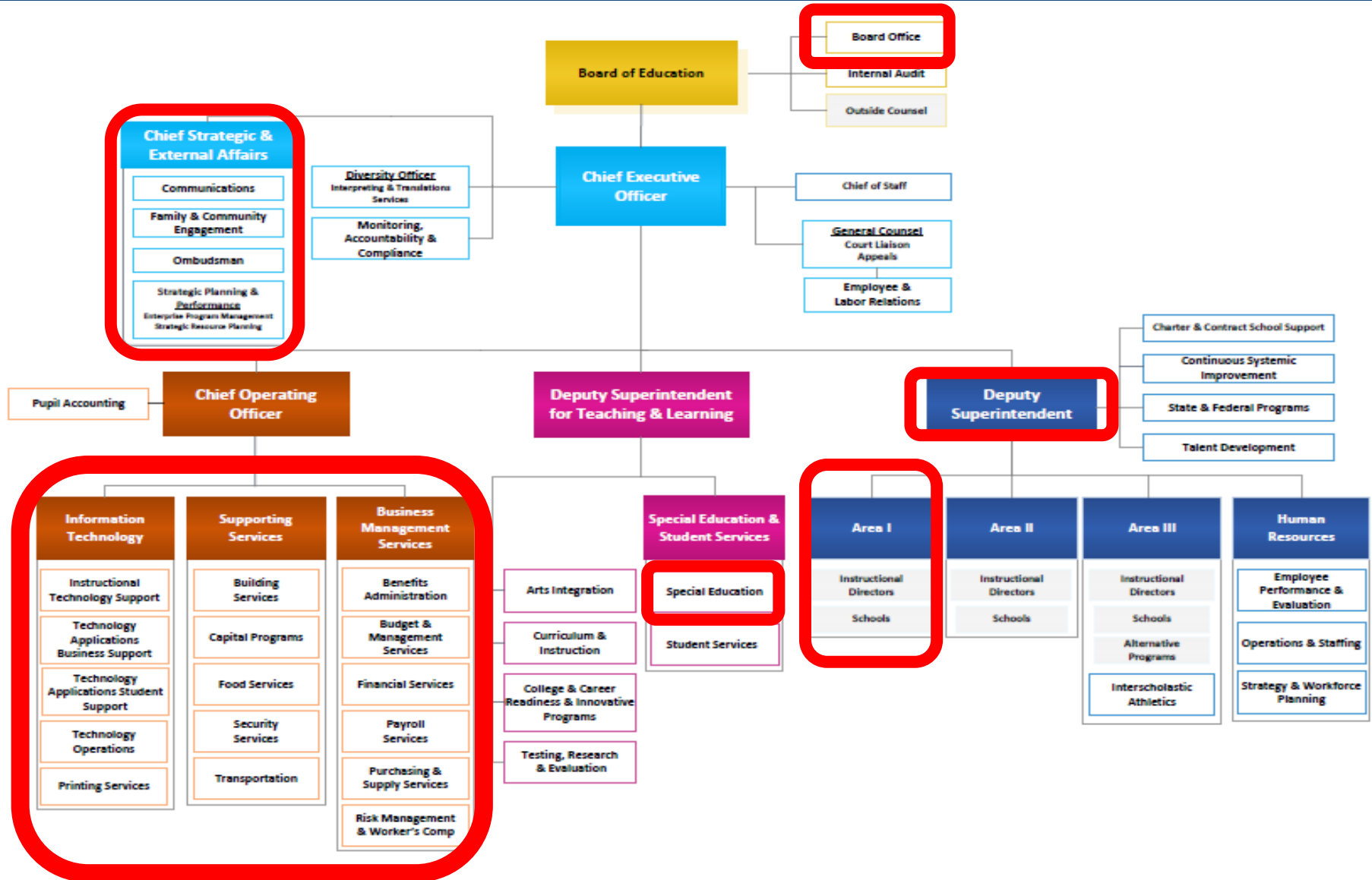
Data – *facilitate* continuous inquiry, objectivity and transparency when examining data

Performance – *facilitate* an intentional shift in focus to examining, improving and reflecting on practice

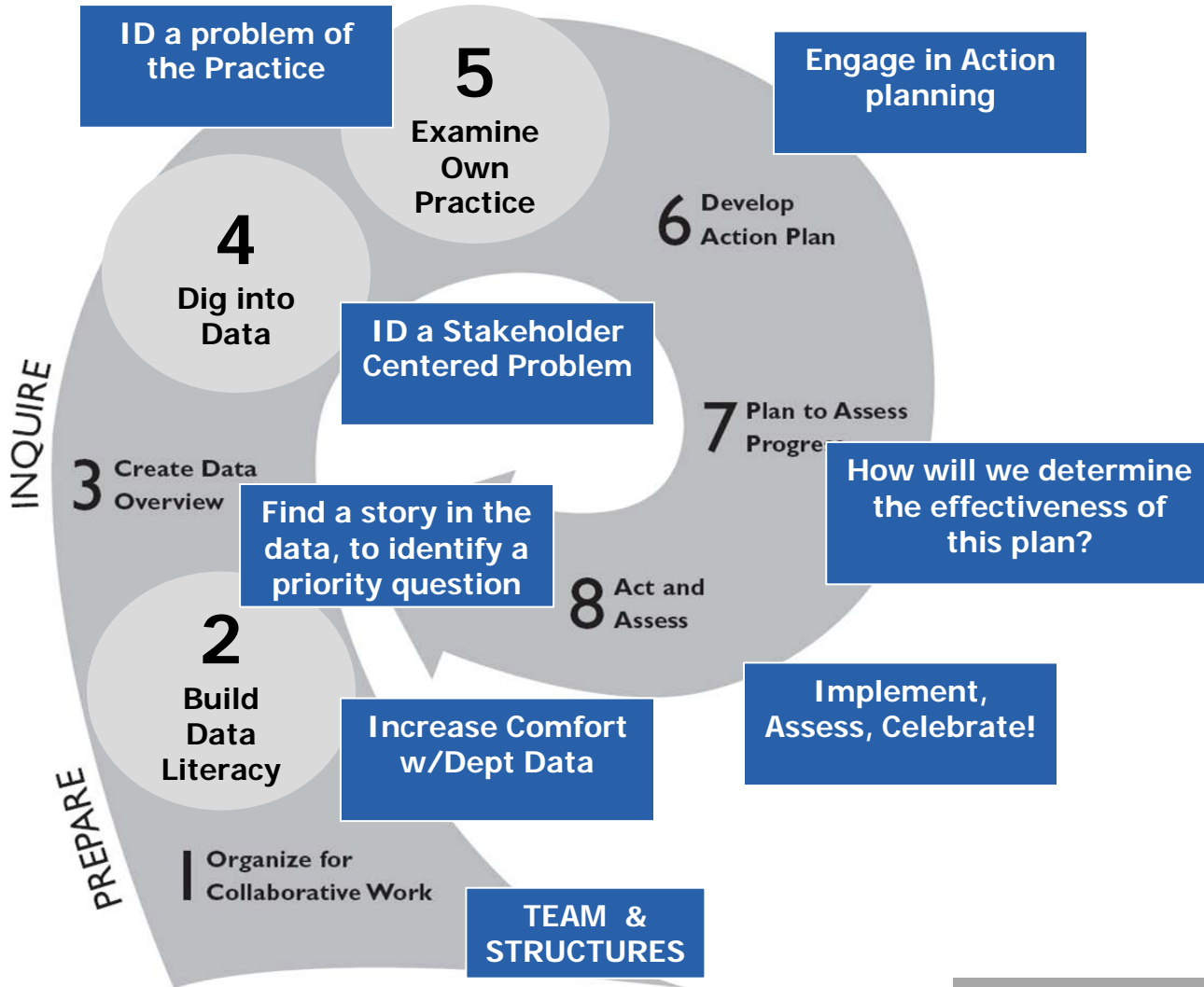




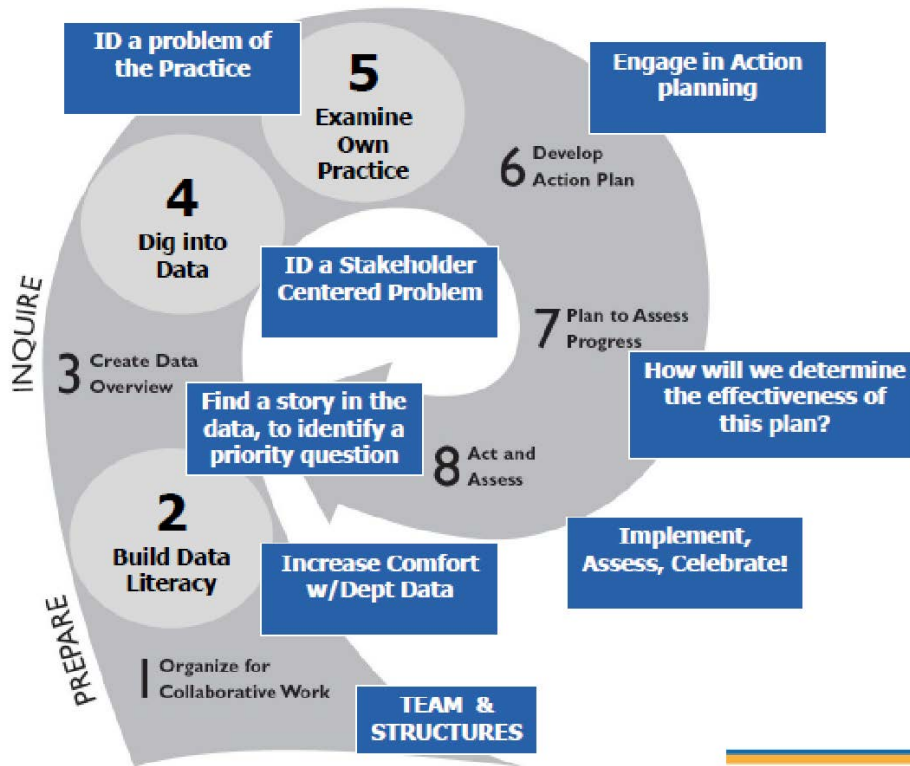
PGCPS Organizational Structure



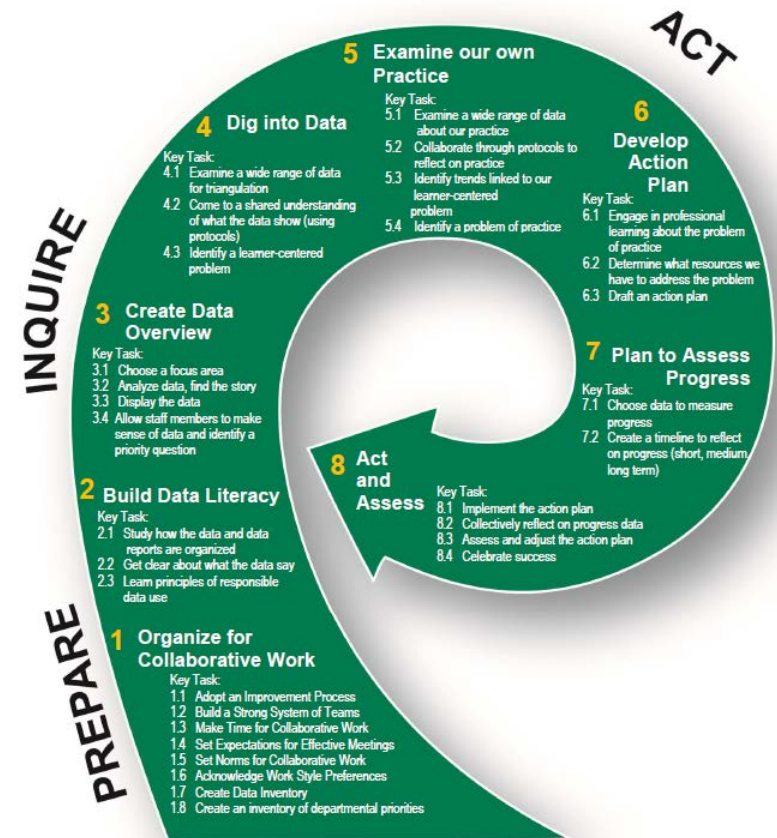
Unpacking the Distinctions in Improvement for Central Office vs. Schools

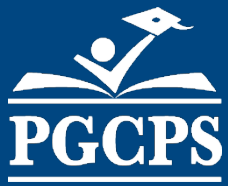


Unpacking the Distinctions in Improvement for Central Office vs. Schools



The Data Wise Improvement Process For Central Office Departments





The Journey to Greatness...

Leveraging Lessons Learned

**ALIGNING THE WORK TO
THE INSTRUCTIONAL
CORE**

**CREATING A CULTURE OF
TRUST**

*Transparency
Intentional
collaboration*

**BUILDING DATA
LITERACY AND
RETHINKING HOW DATA
ARE USED**

**CREATING A SHARED
UNDERSTANDING ABOUT
WHAT IT MEANS TO
IMPROVE**